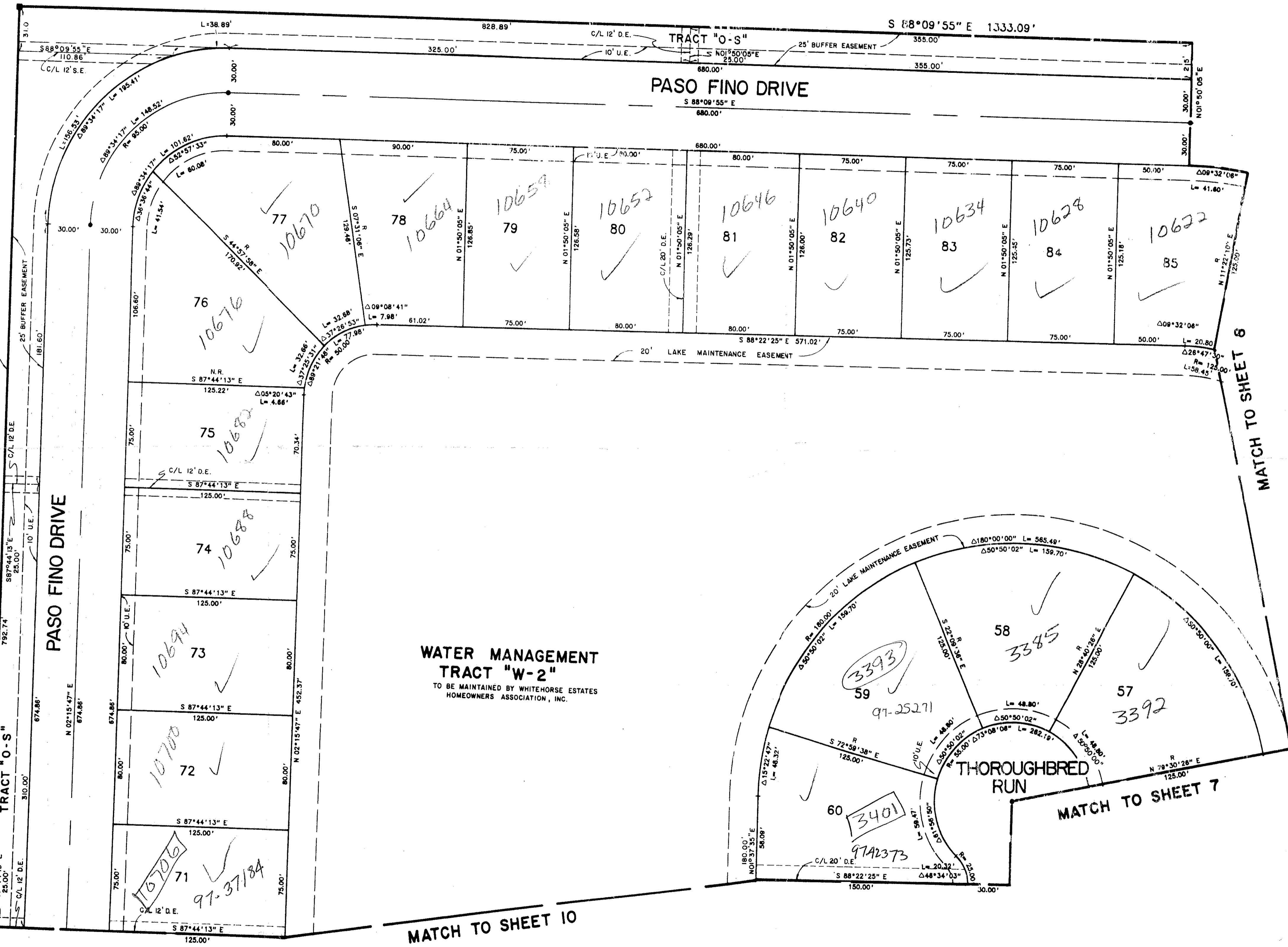


# WHITEHORSE ESTATES

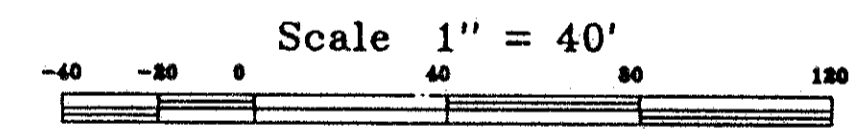
PALM VIEW LAKES A PLANNED UNIT DEVELOPMENT  
 BEING A REPLAT OF A PORTION OF TRACTS 5 THRU 13 INCLUSIVE, BLOCK 26, PALM BEACH  
 FARMS COMPANY PLAT NO. 3, PLAT BOOK 2, PAGES 45 THRU 54, INCLUSIVE, PUBLIC  
 RECORDS OF PALM BEACH COUNTY, FLORIDA AND A PORTION OF THE NORTHWEST QUARTER  
 OF SECTION 24, TOWNSHIP 44 SOUTH, RANGE 41 EAST, PALM BEACH COUNTY, FLORIDA.  
 SHEET 9 OF 10 JULY, 1994.

NOT PLATTED

STATE OF FLORIDA  
 COUNTY OF PALM BEACH  
 This Plat was filed for record at \_\_\_\_\_  
 on Page \_\_\_\_\_  
 and duly recorded in Plat Book No. \_\_\_\_\_  
 on Page \_\_\_\_\_  
 Dorothy H. Wilken, Clerk of the Circuit Court  
 By \_\_\_\_\_ D.C.



PET. 86-100A  
 5/2/4/G



WHITEHORSE ESTATES  
 SHEET 70  
 BLOCK 26  
 PLAT NO. 3  
 PLAT BOOK 2  
 PAGES 45 THRU 54  
 89-1041  
 89-1041  
 89-1041

0517-001

73/70

**Landmark Surveying & Mapping Inc.**  
 1850 FOREST HILL BOULEVARD  
 PH. (407)433-5405 SUITE 100 W.P.B. FLORIDA

**WHITEHORSE ESTATES**